

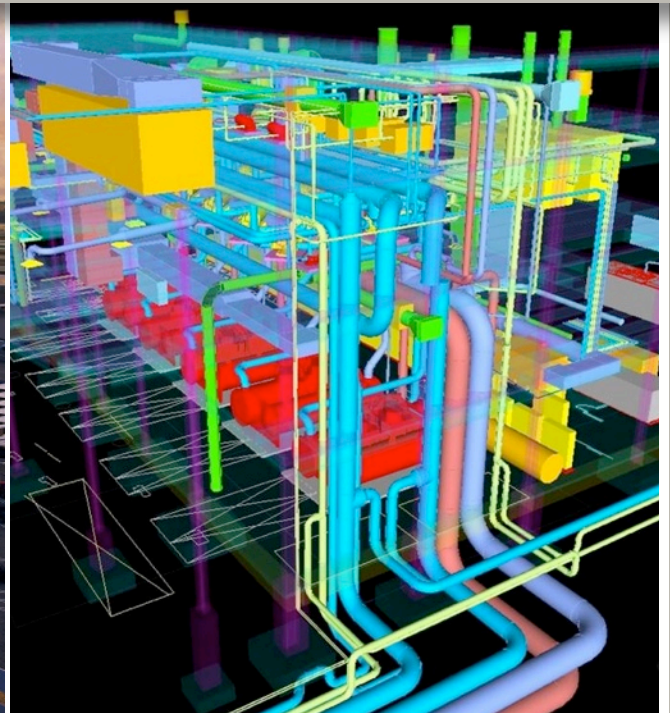
# DESIGN BUILD

ENGINEERING  
PRE-CONSTRUCTION  
FABRICATION  
INSTALLATION



**Murray Company**  
MECHANICAL CONTRACTORS

[www.murraycompany.com](http://www.murraycompany.com)



## ABOUT

Proven experience in conjunction with fully-equipped fabrication facilities and extensive engineering expertise, Murray Company is the Southwest's leading full service Mechanical Contractor, specializing in biopharmaceutical and semiconductor.

## MISSION

Murray Company is committed to being the most respected, sought after mechanical contractor and engineers, providing value added services while creating successful partnerships with each of our clients. We want our clients to feel the need to share with others the great experience they have had with Murray Company. We provide a strong family atmosphere that is based on hard work, safety, honesty and pride of ownership.

## ESOP

Murray Company is 100% Employee Owned through our Employee Stock Ownership Program (ESOP).

- We encourage an innovative and entrepreneurial spirit.
- 2002 Murray Company became 100% employee owned. All of our stock is owned by our active employees through their ESOP Retirement Plan.
- In a recent professional survey, 91% of our employees said they were highly satisfied or satisfied with their employment.
- Personal motivation to ensure that each and every project succeeds.

## SAFETY

At Murray Company our commitment to safety is above and beyond compliance.

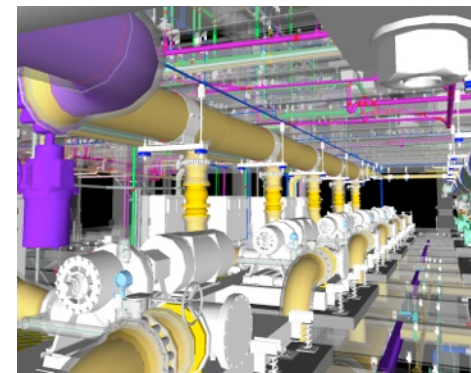
- ✓ We have an effective safety culture that uses empowerment as its core.
- ✓ Everyone who works for us has the right and obligation to take the appropriate action if an unsafe condition is discovered.
- ✓ Our training program includes continual training.
- ✓ Daily pre-task planning which begins at the start of the shift giving every crew-member the opportunity to express any safety concerns associated with the day's scope.
- ✓ In-house certified trainers for CPR, First Aid, forklift, scissor lift, and competent person certifications.



- ✓ Bi-yearly supervisor's safety meeting.
- ✓ Over 150 foreman and supervisors with OSHA 30 hour certification.

## CAPABILITIES

The ever-growing design build market has made in-house design capabilities.



*LAX Central Utility Replacement Plant.  
Design began January 2011 and completed by summer 2014.*

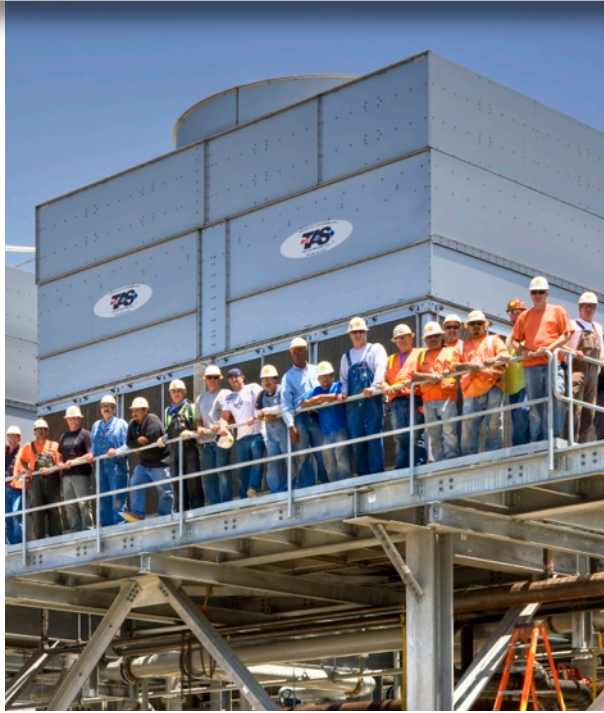
Proud Members of:



*Design Build Institute of America (DBIA)*



*U.S. Green Building Council Member (USGBC)*



## EVIDENCE OF OUR SUCCESS

motivated Murray Company to invest heavily in our

- ✓ Murray Company has a staff of professional engineers, engineers in training, designers, CAD operators, and detailers, capable of designing virtually any hydraulic system required.
- ✓ The design department has the benefit of both engineering knowledge and construction expertise to produce documents of the highest caliber that are both efficient and pragmatic.
- ✓ The CAD department utilizes state-of-the-art 3D software and BIM systems for coordination, fabrication, and virtual facility management.
- ✓ Our LEED Accredited Professionals have the knowledge to add value to the LEED certification process that is part of nearly every design build project today. Water conservation is a major priority, not only for LEED certification, but for overall sustainability in general. Our LEED APs have the ability to perform water calculations and make fixture selections that will maximize the water savings on any project.

Our Design Build experience includes such complex projects as the World's Largest Micro-Processor facilities (name must remain unknown), UC Irvine Medical Center's Replacement Hospital, and myriad of high-rise structures, including EVO Condominiums, as seen in the National Geographic documentary known as "L.A. Hard Hats," episode Pipe Pullers.

### LAX CENTRAL UTILITY PLANT \*

*Los Angeles, California*

Service: Design Build Plumbing/HVAC  
 Owner: Los Angeles World Airports  
 Amount: \$272,000,000.00  
 LEED® Silver certification

The project provides LAX with a new, 75,000 square-foot CUP with a 20,000-ton cooling capacity, replacing utility distribution piping, electrical and communications duct banks, reclaimed water, fire water, and potable water piping to all terminals at LAX.

### LA LIVE HOTEL & RESIDENCES \*

*Los Angeles, California*

Service: Design Build  
 Owner: AEG Worldwide  
 Amount: \$26,000,000.00  
 LEED® Silver certification

L.A. Live entertainment district focal point is the 55-story hotel and condominium complex featuring 123 Ritz-Carlton luxury hotel rooms, 224 Ritz-Carlton Residences and 878 J.W. Marriott hotel rooms.

### EVO CONDOMINIUMS \*

*Los Angeles, California*

Service: Design Build  
 Owner: The South Group  
 Amount: \$140,000,000.00  
 LEED® Silver certification

24-story high rise features roof-top amenities including a deck, fitness room, and lounge. In the 645,000 ft<sup>2</sup> of space there are 311 residential units, retail spaces, and three floors of underground parking.

### UC IRVINE MEDICAL CENTER

*Orange, California*

Service: Design Build  
 Owner: UCI Medical Center  
 Amount: \$650,000,000.00  
 DBIA Western Pacific Regional Award

The UCIMC Replacement Hospital project expanded the University of California Irvine's Medical Center with the construction of a new 191-bed, seven-story hospital and adjacent five-level clinical laboratory.



# Murray Company

MECHANICAL CONTRACTORS

Proven experience in conjunction with fully-equipped fabrication facilities and extensive engineering expertise, Murray Company is the Southwest's leading full service Mechanical Contractor.

**Main Office**

18414 South Santa Fe Avenue  
Rancho Dominguez, CA 90221

Ph 310.637.1500

**Thousand Oaks Branch**

3541 Old Conejo Road #119  
Newbury Park, CA 91320

Ph 805.376.0252

**San Diego Branch**

8520 Production Avenue  
San Diego, CA 92121

Ph 858.952.8795

**Bay Area Branch**

3179 Diablo Avenue  
Hayward, CA 94545

Ph 510.962.9460

Visit [www.murraycompany.com](http://www.murraycompany.com) to learn more about our core competencies.